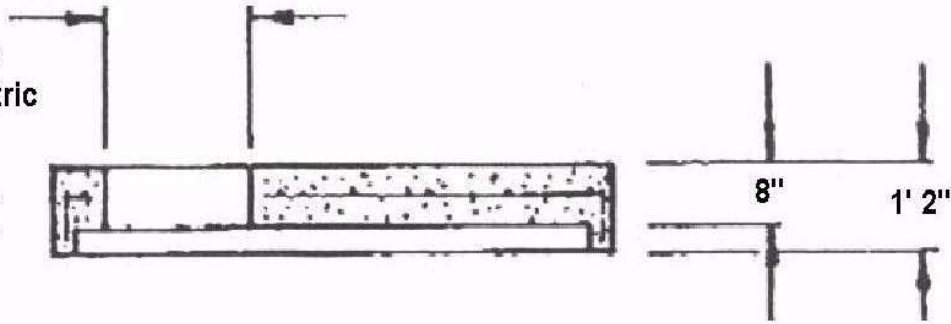


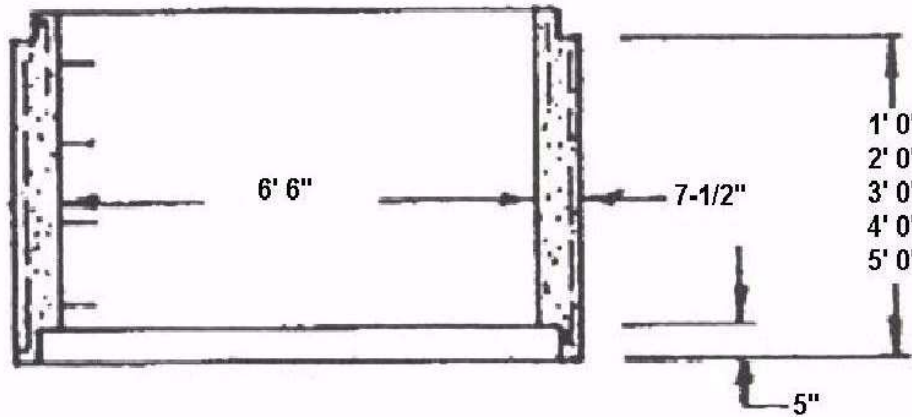
- Cover Opening
 - 24" or 30"
 - Round or Square
 - On Center or Eccentric

Cover



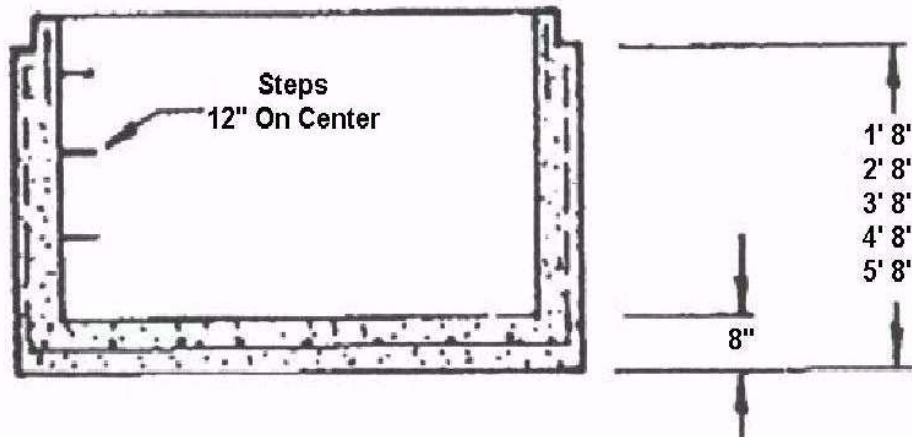
Weight
 4,925 lbs.

Barrel



Weight
 2,150 lbs.
 per Vertical Foot

Integral Base



Weight
 - Floor Slab - 4,875 lbs.
 - Walls - 2,150 lbs.
 per Vertical Foot

Concrete - 4000 psi @ 28 days
 Designed for AASHTO H-20 Loading
 Concrete and Reinforcing as per ASTM C-478

6' 6" Diameter Manhole

Grimm Building Materials Co., Inc.

Phone - (518) 272-1100 Fax - (518) 272-0229

Precast Concrete Division

96 Albany Avenue

P.O. Box 157

Green Island - Troy, New York 12181

www.grimmbldg.com