

GLEN-GERY

# THIN BRICK

Genuine  
Fired  
Brick



MILWAUKEE



STRATFORD



CEDAR LAKE



BAYHILL

**SIZES:**

Modular (1/2" x 2-1/4" x 7-5/8")  
straights and corners



**INTERIOR WALL CAP  
& WALL CAP CORNERS:**

Wall caps and wall cap corners can be  
special ordered. Contact your Glen-Gery  
representative for more information.



Wall caps and  
wall cap corners are  
available in  
all color ranges



OLDE DETROIT



VERA CRUZ



NOB HILL



ROSEWOOD



ABERDEEN



GRAYLING

# CAPTURE THE WARMTH AND VALUE OF BRICK WITH GLEN-GERY'S EASY-TO-INSTALL THIN BRICK.

Thin Brick retains the beauty of brick when building design or other considerations may not permit the use of standard brick masonry, while still meeting the same high standards of uniformity and quality that we achieve with our full-size face brick.

A variety of applications, ranging from fireplaces and brick planters to interior and exterior walls, can be done quickly and economically, all with the durability and richness of genuine Glen-Gery Brick.

Glen-Gery Thin Brick is available in Modular size (1/2" x 2-1/4" x 7-5/8") stretcher and corner units with a papercut finish in 10 standard colors that meet ASTM C 1088, Grade Exterior, Type TBS standards for durability, uniformity and quality. Special order sizes are available upon request.

Let Glen-Gery Thin Brick add a beautiful dimension to your next building project.

## ADHESIVE APPLICATION

Interior Application on  
Masonry/Concrete Backing:

- Prepare surface
- Determine Thin Brick layout
- Apply adhesive with trowel
- Place Thin Brick
- Point Thin Brick
- Clean surface

Interior Application on  
Wood/Steel Stud Backing:

- Prepare surface
- Determine Thin Brick layout
- Apply adhesive with trowel
- Place Thin Brick
- Point Thin Brick
- Clean surface

*For more detailed  
instructions, see  
the Thin Brick  
Installation Sheet.*

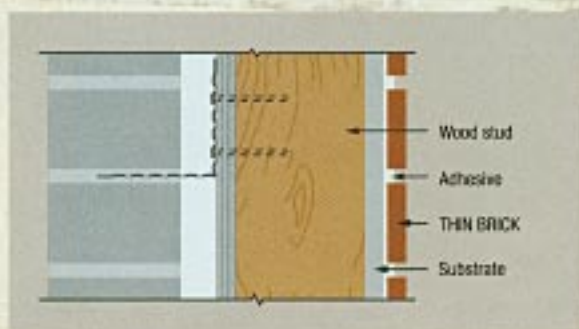
## MORTAR APPLICATION

Interior/Exterior Application  
on Masonry/Concrete:

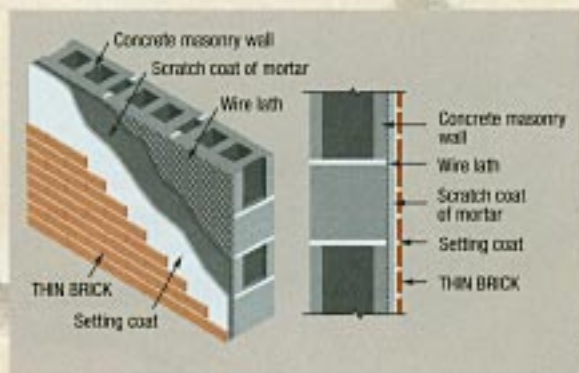
- Prepare surface
- Determine Thin Brick layout
- Install galvanized wire lath
- Apply scratch coat of mortar
- Apply leveling coat (as needed)
- Apply setting coat
- Butter backs of Thin Brick
- Place Thin Brick
- Point Thin Brick
- Clean surface

Interior/Exterior Application  
on Wood/Steel Framing:

- Prepare surface
- Determine Thin Brick layout
- Apply membrane
- Install galvanized wire lath
- Apply scratch coat of mortar
- Apply leveling coat (as needed)
- Apply setting coat
- Butter backs of Thin Brick
- Place Thin Brick
- Point Thin Brick
- Clean surface



ADHESIVE INTERIOR APPLICATION ON  
WOOD/STEEL STUD BACKING



INTERIOR/EXTERIOR MORTAR APPLICATION  
ON MASONRY/CONCRETE

 **Glen-Gery Brick**

**Caledonia Plant**  
5652 Pinker Road  
P.O. Box 398  
Caledonia, OH 43314  
(419) 845-3321  
[www.glengerybrick.com](http://www.glengerybrick.com)  
e-mail: [gg@glengerybrick.com](mailto:gg@glengerybrick.com)

For more information, please contact your Glen-Gery representative.

**BRICKS R US**  
A Division of Grimm Bldg  
96 Albany Ave  
Green Island, NY 12183  
Phone 518 270-1633  
Fax 518 272-4596