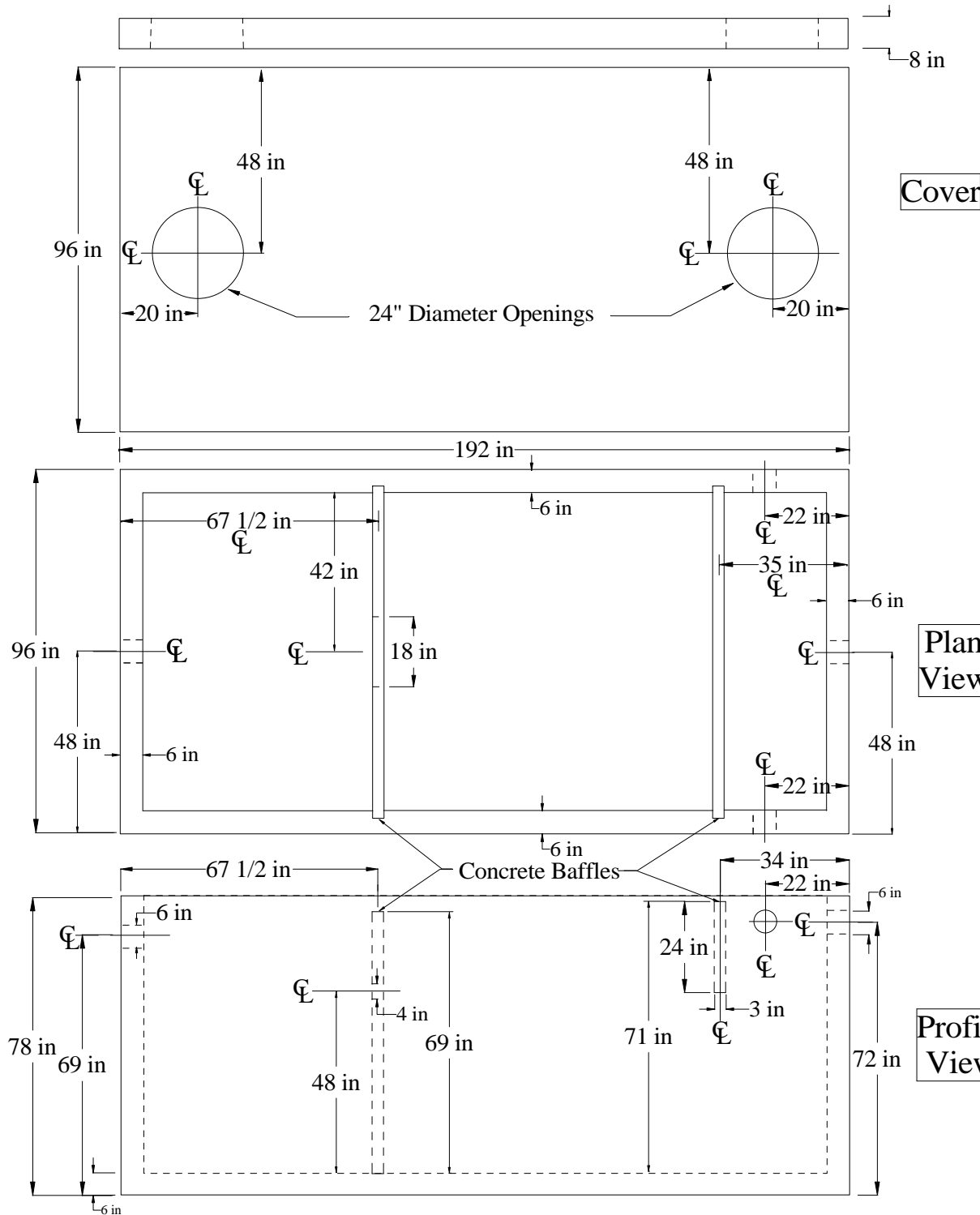




Grimm Building Materials Co., Inc.
96 Albany Avenue
P.O. Box 157
Green Island - Troy, New York 12181
Phone - (518) 272-1100
Fax - (518) 272-1100
www.grimmbldg.com



4000 Gallon Seamless Extra Heavy Duty Septic Tank

Designed For AASHTO H20-44 Live Load

Concrete
4000 psi @28 days
Entrained Air - 5%-8%
Concrete and Reinforcing as Per
ASTM C890

All "Holding Tanks" and "Oil/Water Separators"
are supplied without an inlet baffle or
second compartment baffle wall.