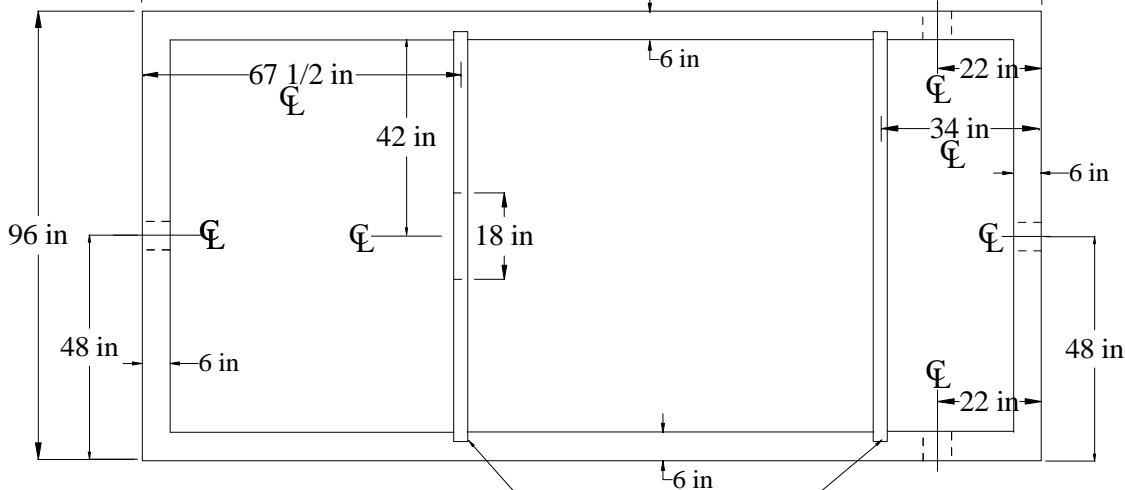


Cover

Grimm Building Materials Co., Inc.
 96 Albany Avenue
 P.O. Box 157
 Green Island - Troy, New York 12181
 Phone - (518) 272-1100
 Fax - (518) 272-1100
 www.grimmbldg.com

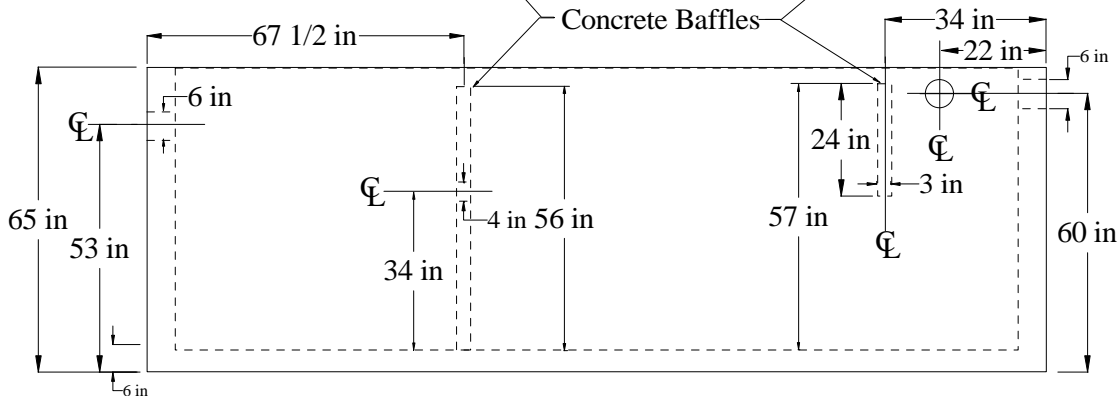


Plan View

3000 Gallon Seamless Extra Heavy Duty Septic Tank

Designed For AASHTO H20-44 Live Load

Concrete
 4000 psi @28 days
 Entrained Air - 5%-8%
 Concrete and Reinforcing as Per
 ASTM C890



Profile View

All "Holding Tanks" and "Oil/Water Separators"
 are supplied without an inlet baffle or
 second compartment baffle wall.